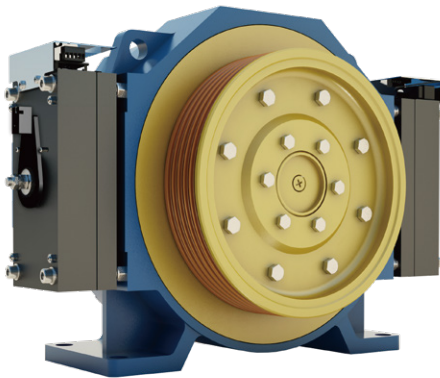
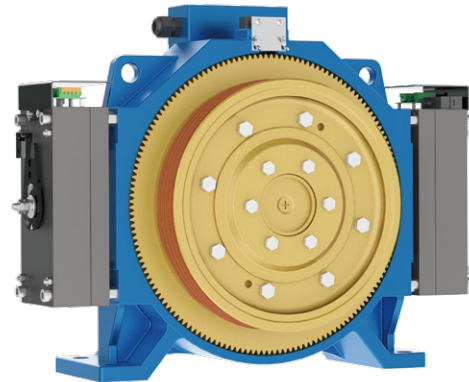


## The Comparison and Analysis of New and Old MCK100

### Comparison of Renderings

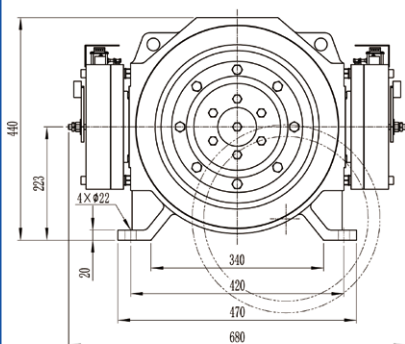


OLD

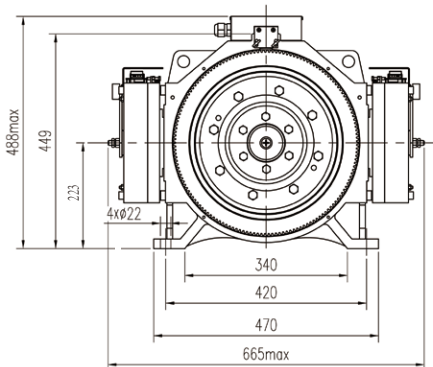
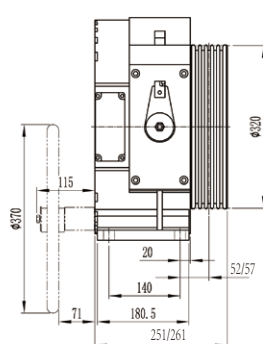


NEW

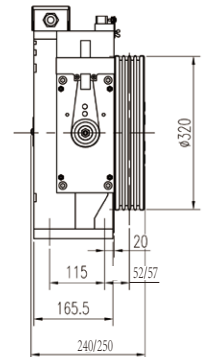
### Comparison of Dimensions



OLD



NEW



### Differences

#### Old

Dimensions: (420 × 140) mm  
 Junction box location: side  
 Handwheel hole: back  
 Poles: 20

#### New

Dimensions: (420 × 115) mm  
 Junction box location: top  
 Handwheel hole: front  
 Poles: 24

### Similarities

Same central height of machine

### Advantages of new models

More strengthened machine body, and more stable mechanical performance.

More optimized electrical scheme, and more comfortable experience.

The reduction of width and thickness and the change of handwheel installation are more conducive to the lightweight layout of elevators.

